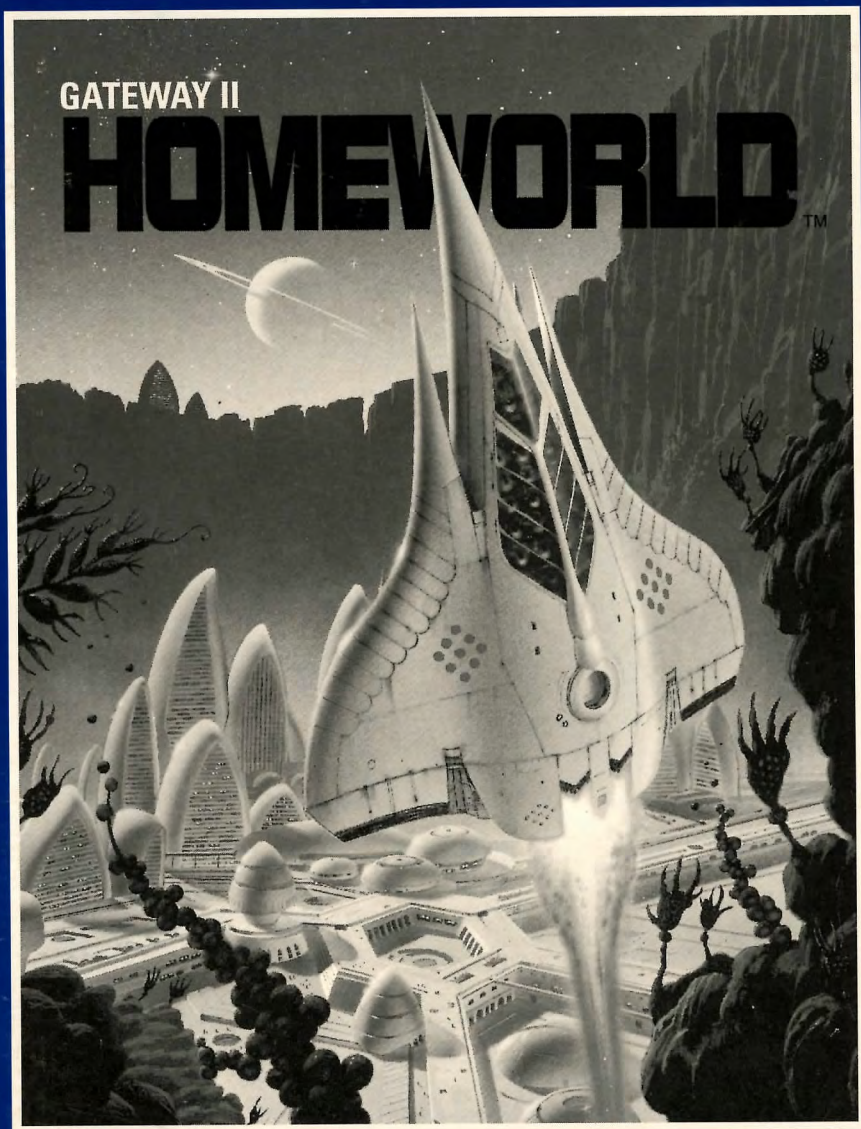


Game Manual



What Is A LEGEND Adventure Game?

In an adventure game from Legend, you become the main character in an evolving story that takes place in a world populated with interesting people, places, and things. You see this world through your main character's eyes, and you play the game by directing his actions.

Like a book or a movie, the story unfolds as you travel from place to place, encountering situations which require action on your part. You can think of each of these situations as a puzzle. The key to solving these puzzles will often be creative thinking and clever use of objects you have picked up in your travels. You will get points as you solve puzzles, and your score will help you monitor your progress.

Throughout the game the richly textured graphics, prose, and music will draw you into a spellbinding adventure that could only be brought to you by the master storytellers of Legend Entertainment Company.

Legend Entertainment Company
P.O. Box 10810
14200 Park Meadow Drive
Chantilly, Virginia 22021
703-222-8500

FAX 703-968-5151

CompuServe E-Mail 76226,2356

Technical Support
From the continental U.S. call Toll Free
9:00 a.m. - 5:00 p.m. weekdays EST/EDT 1-800-658-8891

European Technical Support (Accolade Europe) 081-877-0880

Technical Support calls from Canada and all
other locations please dial 703-222-8500

Table Of Contents

Introduction to <i>Gateway II: HOMEWORLD</i>	4
Quick Start: Installation	6
Quick Start: Playing the Game	7
Installation and Start-up	8
Configuration Options	9
Music	10
Introduction to the Game Interface.....	12
Playing the Game With a Mouse.....	15
Playing Without a Mouse	17
Save, Restore, and Quit	19
Talking to the Game	20
Using the Alternate Interfaces	22
Helpful Hints	24
Things to Try at the Start of the Game	25
Game Commands and their Abbreviations.....	26
About the Authors	29
Credits	30
Help! Troubleshooting and Technical Assistance.....	31
Creating a Boot Floppy	33
Legal Stuff	35

Even if you are an experienced adventure game player who thinks that instruction manuals are best used as confetti at sporting events, you should still read the sections with names in **bold** for valuable information about this game.

Introduction To Gateway II: HOMEWORLD

The Story of Gateway I

Five hundred thousand years ago, an alien race called the Heechee ruled the galaxy. They were a powerful race that mastered faster-than-light travel and built starships; a race that colonized hundreds of worlds across thousands of light years of space. Then they vanished.

The Heechee left behind a few abandoned artifacts and installations to mark their passage. One of those artifacts was Gateway, a space station in orbit around Earth's sun. Humanity discovered Gateway by accident in 2077. Gateway was home to nearly 1,000 small but operational faster-than-light starships, and these ships brought new hope to the 20 billion inhabitants of a starved and tired Earth.

You became a Gateway prospector in 2102 after winning a lottery that freed you from a hard life in the food mines of environmentally devastated Wyoming and Montana. As a prospector, it was your job to ride the alien starships from Gateway to their pre-programmed destinations, looking for other Heechee technology that might be of use in solving Earth's problems. Being a prospector was a tremendous gamble: you might return with a motherlode of technology that guaranteed vast wealth, or you might materialize out of Tau space inside the core of a star. Your adventures as a Gateway prospector earned you \$50 million and a place in history.

Soon after your arrival on Gateway, you learned why the Heechee disappeared. During their colonization of the galaxy, they had discovered traces of an ancient and deadly race of electronic beings, strange intelligences that had little regard for organic life. The Heechee called these beings the Assassins because evidence suggested that they were responsible for actively seeking out and destroying hundreds of other spacefaring civilizations.

The Assassins had established a network of surveillance stations across several galaxies that were designed to search for signs of faster-than-light travel, communications broadcasts, and other indications that new spacefaring races had evolved. The Assassins monitored these stations and made periodic sweeps to destroy developing civilizations before they became too powerful.

The Heechee were beginning to register on one of the Assassin scanners, a huge moon-sized sensor station that the Heechee called the Watchtower. The Heechee feared that the Assassins were getting ready to come out from wherever they were hiding and annihilate the Heechee.

The Heechee had a plan for disabling the Watchtower, a plan that involved the activation of a cloaking system that would warp space around the Assassin sensors, shielding them from activity in half of the Milky Way galaxy. The

Heechee built enormous shield generator towers on four planets and a complex control system to orchestrate the tremendous energies involved in building and maintaining a stable spacetime disruption.

But after they built the cloaking system, the Heechee didn't turn it on. They fled rather than risk the horror of a confrontation with the Assassins. They left the cloaking system within a few steps of being activated, hoping that another spacefaring race would evolve and complete their plan.

Unfortunately for you and the rest of humanity, the discovery of Gateway and the development of advanced technology played right into the hands of the Heechee and their ancient plan. Earth was now faced with the same dilemma that the Heechee had wrestled with 500,000 years ago. Earth's leaders had to make a choice: follow the Heechee plan and activate the cloaking system, risking a confrontation with the Assassins in the process, or stop space travel and halt Earth's technological progress.

You were selected to activate the cloaking system. You embarked on an odyssey that took you across the galaxy and finally inside the Watchtower itself. Your mission was a success: You activated the cloaking system and hid humanity from the watching eyes of the Assassins.

While you didn't defeat the Assassins, you did buy time for Earth. The elimination of the Assassin surveillance station provided humanity with time to develop and room to grow.

You retired from the life of a Gateway prospector after that fateful mission.

It is now 2112, ten years after your return from the Watchtower.

Quick Start: Installation

If you are new to DOS and game playing on the PC, then skip this page (and the next one) and move to the section entitled *Installation and Start-up*. If you are an experienced gamer, wise in the ways of DOS, hard disks, and music cards, then these "Quick Start" sections will get you up and running in no time. To install the game on your hard drive:

1. Make backup copies of the disks.
2. Make sure you have at least 9,000,000 bytes of free space on your hard drive.
3. Insert Disk #1 in your floppy drive, log on to that drive by typing **A:** or **B:**. Then type **INSTALL** to start the installation program and follow the directions on the screen.
4. If you have a mouse, be sure you have loaded the mouse driver.
5. The installation program will create a batch file named **LEGEND.BAT**. To start the game, type **LEGEND**.

If the above makes no sense to you, or if it doesn't work, or if you just like to read manuals, then turn to the *Installation and Start-up* section starting on Page 8 for detailed installation and startup instructions.

In addition to this manual, your game package should contain the following elements:

SET OF DISKS: 4, 3 1/2" High Density disks
WARRANTY CARD
HINT BOOK

Quick Start: Playing The Game

To bypass the introductory sequence, press **ESCAPE**. If you are a fast reader and the game displays messages too slowly for you during these scenes, press the space bar when you are ready to move to the next message. Like other Legend adventure game products, *Gateway II* features a very flexible game interface that you can customize. You can use the mouse to interact with the picture, build game commands, and change the game interface (using the "buttons" in the upper left hand corner of the screen). You can also enter game commands by typing them in at the command line. You are in control and can decide what works best for you.

Using the mouse you can:

1. Talk to characters by double-clicking on them.
2. Move from place to place by clicking on the compass rose.
3. Single-click on an object in a picture to look at it and double-click on an object to take it, open or close it, etc.
4. Select a verb from the verb menu and then click on an object in a picture to apply the verb to it.
5. Build complex commands quickly from the verb, object, and preposition menus. (Single-click selects the word, double-click finishes the command.)

You can start typing at any point, and the words you type will appear on the command line. You will be entering game commands, combinations of words that tell the main character in the game what to do at each turn (e.g. **EXAMINE THE DESK, TAKE THE CRYSTAL, PUT THE DEBIT CARD IN THE SLOT, ASK EXEGESIS ABOUT HIMSELF**, etc.). Press the **<ENTER>** key to execute a command.

If you do not have a mouse, you can simulate one by pressing **<TAB>**. This puts a cursor on the screen which you can move around using the arrow keys. "Click" by pressing **<ENTER>** and "double-click" by pressing **<SHIFT>** **<ENTER>**.

Again, if you do not have a mouse, there is yet another fast way to build commands using the keyboard. Press **<TAB>** again to begin using this feature. Then use the arrow keys to move the highlight bar back and forth between the menus, press the space bar to select a word, and press **<ENTER>** to execute your command.

Installation And Start-up

INSTALLATION

You will need approximately 9,000,000 bytes of free space to install *Gateway II: HOMEWORLD* onto your hard disk. To proceed with the installation:

1. Put Disk #1 from your game package in your floppy drive.
2. Type the letter of the floppy drive followed by a colon and press **<ENTER>**. For instance, if you put Disk #1 in Drive A, you would type A: **<ENTER>**. Then type **INSTALL<ENTER>**.
3. Follow the instructions presented by the installation program. When installation is complete, you may start the game using the instructions in the next section.

START-UP

After you have completed the three steps above, follow the instructions below to start your game:

1. Change to the directory in which the game was installed (The default directory that the installation program puts this game in is **\GW2**). For example, if you installed this game in **D:\GAMES\LEGEND**, you would type: **D: <ENTER>** followed by **CD \GAMES\LEGEND <ENTER>**.
2. Start the game by typing **LEGEND <ENTER>**.
3. The installation program will create a batch file named **LEGEND.BAT**. You may decide to override these defaults by running the application directly by typing Home followed by one or several of the configuration options described in the section that follows.

For additional information on configuration options and defaults, refer to the *Configuration Options* and *Music* sections.

Configuration Options

If you wish to override any of the defaults for the game configuration, you may type one or more of the following options, separated by spaces, after typing **HOME** on the MS-DOS command line:

- | | |
|----------------|---|
| VGA | Makes the game display VGA graphics (the default mode). |
| SVGA | Makes the game display Super VGA graphics. |
| XMOUSE | Overrides the default Microsoft mouse driver display routines. Use if you experience problems with your mouse. |
| ADLIB | Causes music to be played through an AdLib Music Synthesizer Card, if present. This option is automatically added to the LEGEND.BAT file when you select Super VGA during installation. |
| BLASTER | Causes music to be played through a Sound Blaster card, if present. You may set the IRQ number and I/O address for your Sound Blaster card by typing: HOME BLASTER <irq number> <i/o address> . |
| MT32 | Causes music to be played on a Roland MT-32 (or compatible) sound module, if present. You may set the IRQ number and I/O address for your MIDI interface by typing: HOME MT32 <irq number> <i/o address> . |
| NOCYCLE | Disables color cycling animation for computers with VGA adapters and color monitors. |

So, for example, if you have a VGA graphics adapter, a Sound Blaster sound board on IRQ 9, you would type **HOME VGA BLASTER 9 <ENTER>** at the MSDOS system prompt.

The XMOUSE parameter is used for mouse drivers that are not Microsoft compatible. If your mouse is not responding or the software is behaving erratically (e.g. the mouse cursor is "eating" the graphics), then you may want to start the game by typing **HOME XMOUSE** to override the default.

Refer to the next section, *Music*, for more information on music card configuration.

Music

Gateway II: HOMEWORLD supports the following music technologies:

AdLib Music Synthesizer Card
Creative Labs' Sound Blaster
Roland MT-32 and compatible MIDI sound modules including
Roland's MT-100, CM-32L, and LAPC-1

Unlike Legend's previous games, *Gateway II: HOMEWORLD* does not have sound effects.

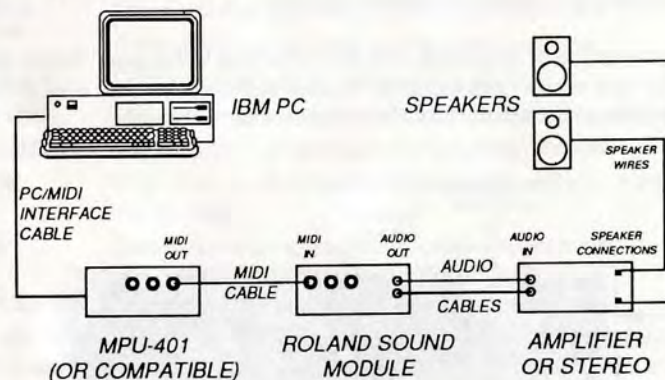
ROLAND MT-32, MT-100, CM-32L, AND LAPC-1 OWNERS

To use your MIDI sound module, make sure your equipment is configured as described below and as illustrated on the accompanying diagram. LAPC-1 owners may ignore items 1, 2, and 3.

1. A PC to MIDI Interface card is installed in your PC.
2. The PC to MIDI Interface card is connected to an MPU-401 or compatible MIDI Interface or MIDI Processing Unit.
3. A MIDI cable is connected from a MIDI OUT connector on the MIDI Interface to the MIDI IN connector on your sound module.
4. The audio output jacks on your sound module are connected to the audio input jacks on your amplifier or stereo.
5. One or two speakers are attached to the speaker connectors on your amplifier or stereo.

If you are having trouble getting your MIDI sound module to operate, the difficulty can probably be traced to one of two causes. First, you may have two cards in your computer that are set to the same IRQ. If this is the case, you can change the IRQ value for one of the cards by using the card's jumpers or switches (although some cards do not allow this). Consult the manual that came with your MIDI interface.

The second possibility is that your MIDI interface may be set to an IRQ other than the default value of 2 and/or an I/O address other than 330. In this case, you must specify the appropriate IRQ value and/or I/O address in the command line when you start the game. For example, to use a MIDI interface card set to operate on IRQ 5 and I/O address 300, you should start the game by typing: **HOME MT32 5 300**.



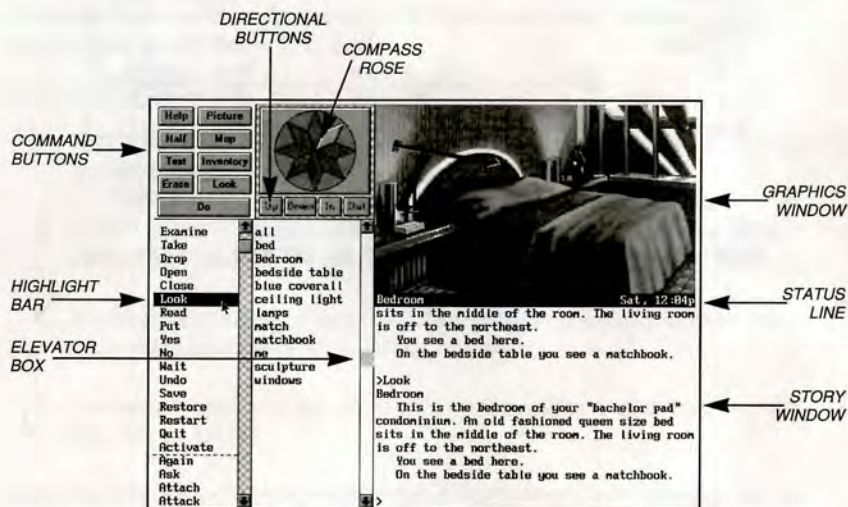
MIDI Wiring Diagram for Roland MT-32, MT-100, and CM-32L

Introduction To The Game Interface

To install and start up the game, see the *Installation and Start-up* section on Page 8.

When the game begins, you will see the title screen, followed by the introduction sequence. If you wish to skip to the beginning of the story, you can hit **<ESC>** at any time to skip the introduction. The game will then ask you if you wish to restore to a previously saved position.

After the introduction sequence, the main interface will appear. While there are many alternate screen interfaces for various activities, you will spend the most time interacting with this screen. It looks like this:



GRAPHICS WINDOW

This window can contain one of the following:

- A picture of your location
- Your inventory (what you are wearing and carrying)
- Your status (score, number of turns taken, etc.)
- A verbal description of your surroundings
- A map

COMMAND BUTTONS

Many of these buttons have function key equivalents. See the information on function keys on Page 18 for more details.

HELP	Displays a help screen
HALF	Removes the menus, making more room for text
ERASE	Removes the last word from the command line
DO	Executes the command on the command line
PICTURE	Displays a picture in the graphics window
STATUS	Displays your score and status in the graphics window
INVENTORY	Displays your inventory in the graphics window
LOOK	Puts a verbal description of your surroundings in the graphics window
MAP	Displays a map of your immediate environment

COMPASS ROSE AND DIRECTION BUTTONS

If you have a mouse, you can move around in the game environment by clicking on the various points of the compass rose and the **IN**, **OUT**, **UP**, and **DOWN** buttons. Legitimate exits from your current location are always highlighted.

VERB MENU

The verb menu contains every verb you need to play the game. There are other verbs you can use, but you will have to type them in. The most commonly used verbs are grouped at the top of the list. The rest of them are in alphabetical order.

PREPOSITION MENU

After you select a verb, the verb menu is replaced with a preposition menu. The amazing thing is that the game will display only those prepositions that you can use with the verb you have selected. Voila! No more pesky parser errors.

OBJECT MENU

This menu contains all the things that you see from your current location. If you want to refer to other objects in the game, you must type them in.

HIGHLIGHT BAR

This is a highlighted bar you can move around to select the next word you want to place on the command line.

ELEVATOR BOXES

Clicking on these boxes and dragging them down is a fast way to move through the menus. Clicking in the column above or below the box will cause rapid movement up or down the menu. Clicking on the arrows at the top or bottom of the column will move the highlight bar up or down one entry in the menu. Note that the elevator boxes are only displayed when there are more menu entries than there is room to display at once.

STORY WINDOW

The story's text appears here. If the window fills with words and you see "MORE" at the bottom, press any key or click the mouse button and the rest of the message will appear. If you would like to expand the size of the window and you do not mind sacrificing the menus, press <F3> for a half-screen or <F4> for a full screen of text. If you would like to see the text displayed before the picture is updated, then type the command **TEXTFIRST**. To switch back to the default of pictures first, type **PICFIRST**.

COMMAND LINE

All your commands will appear on this line, whether you enter them by typing, selecting from the menu, or clicking on the compass rose or graphics window.

STATUS LINE

This line displays your location and the local time of day.

Playing The Game With A Mouse

If you have a mouse, playing this game is simplicity itself. While you are using the main interface, you can do all of the following by pointing and clicking:

MOVE AROUND

Move around from place to place by single-clicking on the compass rose or the directional buttons next to it. Legitimate exits from your current location are always highlighted. Double-clicking on an exit that is pictured in the graphics window will move you through that exit.

EXAMINE OBJECTS

Examine objects by single-clicking on them in the graphics window. Take them by double-clicking.

TALK TO CHARACTERS

If a person is someone who is interesting to talk to, a simple double-click on the character in the graphics window will bring up a list of questions you can ask. Click on one of these and the character's response will appear.

CUSTOMIZE THE INTERFACE

Click on the command buttons in the upper left hand corner of the screen to change the display in the graphics window or to eliminate the menus.

You can build game commands using the menus on the left hand side of the screen or you can type them in. If you choose to type, you will see the words that you type appear on the command line in the story window on the screen. Press <ENTER> to execute a command. After reading this section, if you need additional information on how to build commands, please refer to *Talking to the Game* and *Game Commands and Their Abbreviations*.

At several points in the game you will interact with different screen interfaces including a starship control panel, a combination lock, a remote control for an alien robot, and other pieces of equipment. These screen interfaces are designed for easy point and click operation. For specific information on these alternative interfaces, please see the section entitled *Using Alternate Interfaces*.

BUILDING COMMANDS WITH THE MENUS

A single-click on a word in the verb menu will place that word on the command line. The verb menu will then be replaced by a preposition menu that lists the prepositions you may legitimately use with the verb you have selected. At this point you can select one of those prepositions, select a word from the object menu, or execute your command by clicking on the DO button.

Naturally, we have built in some short-cuts. For example, if you know prior to clicking on a word that it will be the last word in your command, you can double-click on it and your command will be executed. Or, if you've already clicked on the last word in your command and you do not want to move the mouse up to the **DO** button, just double-click on the last word and the command will be executed. Another short-cut is to select a verb from the menu and then single-click on an object in the picture in the graphics window.

FINDING WORDS QUICKLY

Because the menus sometimes contain many words, we have also included a few short-cuts for getting to words that are far down in the menu. You can click in the grey area to the right of each menu to rapidly move up or down in that menu. (If there is no grey area, the entire menu is visible.) Or you can click on the "elevator box" in the column to the right of each menu and drag the box up or down while keeping the mouse button depressed.

An even faster method is to hold down the **<SHIFT>** key on the keyboard and then press the first letter of the word you want. The highlight bar will then jump to the first word that begins with that letter. You can also use the **<HOME>** and **<END>** keys on the keyboard to jump to the top or the bottom of the list, or the **<PGDN>** and **<PGUP>** keys to move up or down the list quickly.

NOTES

To remove the last word from the command line, click on **ERASE**.

Double-clicking on an object in the graphics window will "do the obvious thing" with that object. For example, climb stairs, eat food, turn off lamp, etc.

If you are using the mouse and you want to type, go ahead. However, once you have begun typing on the command line, you cannot go back to using the mouse until that command has been executed or erased.

If you select a noun as the first word in your sentence, the game assumes you are trying to speak to that person or thing, and therefore it adds a comma after the word. (For example, **SAILOR, GIVE ME THE ROPE.**)

If your mouse is not responding or is destroying the picture, then the mouse driver is probably not Microsoft-compatible. Try returning to DOS and restart the game by typing **HOME XMOUSE**.

If you definitely do not want to use the menus, press **<F3>** and they will go away, creating more room for text. If you want to return to the golden years of adventuring, press **<F4>** for the all text look.

Playing Without A Mouse

EMULATING THE MOUSE

If you do not have a mouse, there are still quick and easy ways to build commands from the menus on the main interface without typing. To do this, first press the **<TAB>** key. When you do, a mouse cursor will appear on your screen. You can move this cursor around by using the arrow keys on your keyboard. Then you can "click" by hitting **<ENTER>**, and "double-click" by hitting **<SHIFT><ENTER>**. This will let you do all the things mentioned in the previous section, Playing the Game With a Mouse.

USING THE MENUS

If you do not want to use the method outlined above, pressing the **<TAB>** key again will give you yet another alternative. This system puts a highlight bar over the first word in the verb menu. You can move this bar back and forth between menus (and up and down within them) by using the arrow keys on your keyboard. Once you have highlighted the word you wish to select, hitting the space bar will place that word on the command line. After you have finished building your command, hitting **<ENTER>** will execute it.

TALKING TO CHARACTERS

If a person is someone who has something to say to you, then the command **<TALK TO CHARACTER>** will bring up a dialogue interface. Use the arrow keys to move through the list of questions. When the question of your choice is highlighted, press **<ENTER>** and the character's response will appear.

ALTERNATE SCREEN INTERFACES

You will encounter a number of alternate screen interfaces which are graphical in nature, but are still easy to use with the keyboard. Simply press **TAB** and then use the "mouse emulator" to steer the mouse cursor around the screen and then press **<SPACE>** to "click" on features.

For additional information, see the section entitled *Using Alternate Interfaces*.

TYPING

If you like to type, go ahead. No matter what method you have been using to build commands, you can start typing at any time. The cursor will appear on the command line and you can enter your commands. Press **<ENTER>** to execute a command.

FUNCTION KEYS

You can use function keys to customize the interface as follows:

- <F1> Displays the help screen
- <F2> Returns the menus to the screen if they are not there
- <F3> Removes the menus and creates more room for text
- <F4> Puts you into fullscreen text mode
- <F5> Displays a picture in the graphics window
- <F6> Displays a map of your surroundings in the graphics window
- <F7> Displays your inventory in the graphics window
- <F8> Describes your surroundings in the graphics window
- <F9> Displays your score and status in the graphics window

Many of these function keys have command button equivalents. See the information on command buttons on Page 25 for more details.

Save, Restore, And Quit

Once you have begun the game, you can use the **SAVE** command whenever you want to capture and store everything you have done so far. **SAVE** allows you to define a point which you can return to if you are "killed" or if you just want to turn off your computer for a while.

When you type **SAVE** (or when you select it from the verb menu), you will be asked to name the **SAVE** file. Choose a name that will remind you of where you are, like "**After First Mission**" or "**Solved Book Puzzle**." The description of the saved game can have up to 33 characters in it.

In the course of playing this game, you may create up to 128 simultaneous **SAVE** files. You can delete **SAVE** files by pressing <ALT><D> when the highlight bar is positioned over the name of the saved game. If you pick the name of an already existing file when you save, the original file will be erased and the new file will take its place. You can edit an existing description by moving the highlight bar to the appropriate line and pressing the space bar or single-clicking on the description if you have a mouse. <ENTER> or a double-click will save your current game with the new description.

When you are ready to return to a place you have saved, type **RESTORE** (or select it from the verb menu). As a reminder, a list of your previously saved games will appear in the **RESTORE** window. When the game asks you for a description, move the highlight bar to the description you want and press <ENTER> or type in a new description. If you type in the beginning of a valid description and hit <ENTER>, the game will automatically match it and fill in the rest of the name. Once you have entered a valid description, you will return to the spot you left as if you had never been away. You will have the same score, inventory, status, etc. that you had when you left. If you want to stop playing, use the **QUIT** command. However, if you quit without saving, you will have to start from the beginning of the game the next time you play.

Talking To The Game

You "talk" to this game by telling the main character what you want him to during each turn. You do this by typing your input on the keyboard, or by clicking the mouse on the menus, the compass rose, or the pictures. For more information, see *Introduction to the Game Interface* and *Playing the Game With a Mouse*.

Your simplest inputs will be directions moving around from place to place:

- >NORTH
- >DOWN
- >SW

Equally simple are inputs which are just verbs:

- >JUMP
- >SCREAM

Let's get a bit more complicated, and add some nouns (or, if you combine them with adjectives, noun phrases).

- >TAKE THE DEBIT CARD
- >READ BOOK
- >EXAMINE THE GLOWING BLUE BRACELET
- >KISS THE PRETTY BLOND WOMAN

You can use articles like "the" or "a" if you wish, but most people just omit them to save time.)

Shall we add a dash of prepositions?

- >SIT DOWN
- >LOOK OUT WINDOW
- >HIDE BEHIND BROWN CURTAIN

Take a deep breath. So far, the noun phrases we have looked at have all been the direct object of the sentence. Now we are going to throw in a second noun phrase, the indirect object!

- >GIVE BOOK TO WOMAN
- >SHOOT GUN AT THE ALIEN
- >BUY DRINK FOR TERRI

Sorry, it is time to introduce some mind-bogglingly complicated concepts. You can include several inputs after a single prompt, as long as you separate them by a period or by the word "then":

- >GET IN SHIP THEN CLOSE HATCH
- >LOOK AT MACHINE. TAKE IT.

You can also use pronouns:

- >TAKE MACHINE. TURN IT ON.
- >TAKE ARTIFACT FROM STAND. EXAMINE IT.

You can use multiple objects with certain verbs (like TAKE and DROP) as long as you separate the noun phrases with a comma or the word "and." You can even use the amazingly useful word "all":

- >TAKE BOOK AND DEBIT CARD
- >DROP BOOK, DEBIT CARD, BADGE
- >TAKE ALL
- >GIVE ALL THE ARTIFACTS TO RECEPTIONIST

There are many people in the game who are fun to talk to and who can give you useful information. A double click on the character in the picture window will bring up a list of questions you can ask. Click on one of these and the character's response will appear. If you are playing without a mouse, type <TALK TO CHARACTER>, then use the arrow keys to move through the list of questions. When the question of your choice is highlighted, press <ENTER>.

Using The Alternate Interfaces

As you play *Gateway II: HOMEWORLD* you will encounter several screen interfaces that are different from the standard Legend interface described earlier. These alternate interfaces include cut scenes, dialogue trees, various futuristic computer systems, an alien genetic manipulator, a starship control panel, a robot interface, and other interesting devices and interfaces.

CUT SCENES

Cut scenes are used to move the story along, and may include text, graphics, and animation in a cinematic sequence. Press any key to move forward through the narrative in the cut scene. Press **<ESCAPE>** to skip the cut scene entirely.

DIALOGUE TREES

You will be interacting periodically with Legend's new dialogue system which permits you to hold conversations with game characters.

To use the dialogue system with a mouse:

Move the mouse to highlight the desired dialogue response, then click to select it.

If you are faced with a single statement or a response (as opposed to a list of choices), simply click the mouse to move on to the next statement or response.

Click on response nodes that are identified by the words "Goodbye", "I'm done chatting", or "exit" to finish your conversation and exit the dialogue interface.

To use the dialogue system without a mouse, simply use the arrow keys to move through the dialogue responses and hit **<ENTER>** to select a response. If you are faced with a single statement or response instead of a list, press **<ENTER>** to move forward.

OTHER ALTERNATE INTERFACES

Most of the other alternate interfaces are simple and should be quite intuitive to use. There are some easy ground rules to remember when you find yourself faced with one of these interfaces:

If you don't have a mouse, you can steer the mouse cursor around with the arrow keys, then "click" by pressing **<ENTER>**.

If you see a little white box in the upper left hand part of the screen, you can exit the interface by clicking on that box (regardless of the other ways you might be able to escape from the interface).

Square, round, or other regularly shaped areas that look raised or shadowed are likely to be buttons. Clicking on buttons is the way to make things happen in one of these alternate interfaces.

Buttons can become "active" or "inactive" depending on your status within a given interface. If you see yellow buttons that change from being dark to being highlighted, or bright yellow, this indicates a change from "inactive" to "active". If you click on a dark or inactive button, nothing will happen.

The slightly more complex interfaces include control panels for alien equipment. Some of the fun in using these interfaces is in figuring out how the controls work. Three of the more complex alternate interfaces have corresponding sections in the Hint Book. If you are having trouble with one of the alternate interfaces listed below, consult the Hint Book for a complete explanation:

The genetic inducer in the lab between the second and third zoo environments on the Artifact (Part II of the game)

The control interface for the robot in the Rescue Station on the ice planet (Part 3 of the game)

The Temple interface in Part 4: Homeworld

Helpful Hints

Here are ten pieces of advice for novices, or even for old pros who are just plain stuck.

1. **Crime pays.** TAKE everything that isn't nailed down.
2. **Keep your eyes open.** EXAMINE things that you come across; you'll get extra tidbits of info.
3. **Two heads are better than one.** Play with a friend, relative, spouse, lover, etc. Even your pet cat may think of something you've overlooked.
4. **Adventuring can be a dangerous business.** SAVE early, SAVE often.
5. **Take it slow.** Read ALL the text and examine all the pictures carefully.
6. **If at first you don't succeed...** If you get stuck at some point, do not go away mad, just go away! Come back later with a fresh mind.
7. **Draw a map.** Although there's an on-screen map, your hand-drawn map can include other information, such as what things are found where.
8. **We didn't create this manual to support our local printer.** Read it! It was designed to remove technological obstacles and make your adventuring experience an enjoyable one.
9. **Try weird stuff.** Sometimes trying wacky things will pay off with a clue; at the least, you'll probably uncover some wacky responses!
10. **If you're really desperate - look in the hint book.** We promise we won't tell. But if you enjoy thrashing it out with other gamers, many computer magazines and bulletin boards will run tips and hints for *Gateway II: HOMEWORLD*...especially if you ask!

Things To Try At The Start Of The Game

If you are really stuck on how to get started, try these twenty inputs right from the start of the game:

>EXAMINE CONTROL UNIT
>GO SOUTHWEST
>EXAMINE MATCHBOOK
>TAKE MATCHBOOK
>READ NEWS FAX
>NE
>SOUTHEAST
>READ SIGN
>SOUTH
>READ SIGN
>OPEN DOOR
- WATCH CUT SCENE -
>NORTH
>NW
>EXAMINE WASTE BASKET
>EXAMINE TRASH
- WATCH CUT SCENE -
>LIGHT MATCH
>DROP MATCH IN TRASH CAN
>SE
>SOUTH
>OPEN DOOR
>EAST

Note that these are not necessarily the "correct" first twenty inputs. Many other inputs are possible during the first twenty turns.

Game Commands And Their Abbreviations

Many of the game commands below have function key or command button equivalents. These are listed in parentheses after the description of the command. In addition, many game commands have single key equivalents.

AGAIN (G)	Repeats your last command.
BRIEF	Tells the game to give you the normal level of descriptiveness, in which you see a full description of a place only the first time you go there. On subsequent visits to the location, you will not get a description, although you can always get one by saying >LOOK (or by playing with the graphics screen in "LOOK" mode). (See also VERBOSE).
CREDITS	Displays a list of everyone who worked on this game what they did.
FULL MODE	Removes the menus, compass rose, and graphics window, leaving you with a full screen of text.
HALF MODE	Removes the menus, but still displays the compass rose and the graphics window. (<F3> key) (HALF button)
INVENTORY (I)	Tells you what your character is carrying.
LOOK (L)	Will give you a full description of your current location. This is always a good thing to try if you do not know what else to do.
LOOK MODE	Displays a verbal description of your surroundings in the graphics window. (<F8> key) (LOOK button)
MAP MODE	Displays a map of your surroundings in the graphics window. (<F6> key) (MAP button)
MENU MODE	Restores the menus to the screen if you have removed them previously. (<F2> key) (MENU button)
MUSIC OFF	Turns off the music.
MUSIC ON	Turns the music back on.

NOTIFY	Normally, the game will tell you when your score changes. If you do not want to be bothered, NOTIFY will turn off this feature. And, if you change your mind, NOTIFY will turn it back on.
OOPS (O)	If you mistype a word, use OOPS instead of retyping the entire input. For example, if you type >TAKE BOK , and the game responds, "I do not know the word 'BOK'," you would simply type OOPS BOOK . Naturally, you menu users will never need to use OOPS .
PICFIRST	Displays room pictures before room descriptions.
PICTURE MODE	Restores the picture to the graphics window. (<F5> key) (PICTURE button)
QUIT (Q)	Tells the game "Hey, I'm outta here!" You might want to SAVE first.
RESTART	Starts the game over. Again, you might want to SAVE first.
RESTORE	Brings you back to any point in the game where you have previously saved.
SAVE	Creates a file which the RESTORE command can use to return you to this point in the story. You should SAVE now and then, and especially before trying dangerous things like >ATTACK GIANT SCORPION .
SCRIPT	Sends all the text output of the game into the specified file, which you can then read, print, edit, delete, etc.
STATUS	Gives you a brief report of your score, the number of turns you have taken, and other information about your progress through the game.
STATUS MODE	Displays your status in the graphics window. (<F9> key)
TEXTFIRST	Displays room descriptions before room pictures.
UNDO	Probably the single most useful thing ever conceived of in all of recorded human history. UNDO simply takes you back one turn, undoing the effects of your last move.

UNSCRIPT	Stops sending the text output to a file.
VERBOSE	Puts you in the level of maximum location descriptions; you will get a full description of your location every single time you enter it. (See also BRIEF).
VERSION	Gives you the release number of this software, as well as some legal stuff.
VOLUME #	If you have a sound card or sound module, the VOLUME command, followed by a number from 1-10, allows you to control the volume of the game's music.
WAIT (Z)	Your character will just stand around while time passes in the story. You can also enter commands like WAIT 45 MINUTES or WAIT 3 HOURS .

ABBREVIATIONS

A	– You would think this would be the abbreviation for AGAIN , wouldn't you. Well, you would be wrong. If that were the case, then a simple input like >GIVE A DOG A BONE would turn into the nightmarish GIVE (AGAIN) DOG (AGAIN) BONE . Consequently, we treat "a" as an article rather than an abbreviation, and shorten AGAIN to "G".
D	– Down
E	– East
G	– Again
I	– Inventory
L	– Look
N	– North
O	– Oops
Q	– Quit
S	– South
T	– Time
U	– Up
W	– West
X	– Examine
Y	– Yes
Z	– Wait
NW	– Northwest
NE	– Northeast
SE	– Southeast
SW	– Southwest

About The Authors

MIKE VERDU – After growing up on Baffin Island, Mike Verdu entered the United States in 1981 when his parents lost their jobs as bird watchers. A devout Zen Buddhist, Mike worked for a large defense contractor building nuclear submarines at the same time that he gained prominence as an environmental activist. He left the defense contractor to head a citizen's advocacy group that opposes the sale of computer based entertainment in any form. Mike hates and distrusts computers, and has never touched a computer keyboard in his life. His hobbies include deep sea diving in the North Atlantic, bungee jumping, and fund raising for the restoration of the Strategic Defense Initiative. Other works by Mike Verdu include the *Guide to Edible and Medicinal Plants of the Adirondack Mountains*, *Use of the Hunger Strike in Corporate Public Relations*, and the best selling *Sexual Fantasies of Madonna Look-Alikes*.

GLEN DAHLGREN – Warning!! Management suspects that shortly after co-authoring Gateway I, Glen was abducted by aliens and replaced with a synthetic duplicate. For months, the synthetic Glen never slept as it feverishly co-authored *Gateway II: HOMEWORLD*. Tests show that lab animals, after playing through the game (without using the hint book, of course), began to speak such Heechee phrases as, "Where's your big head?" and "Fogram is Number One!" Management believes that the risk to you is significant, and that playing this game will gradually allow Heechee space radio broadcasts to take over your mind. In the meantime, we've left a pizza on the back porch for the real Glen, hoping he'll show up soon.

Credits

Design & Implementation of Part I: Escape	Mike Verdu
Design & Implementation of Part II: The Artifact	Mike Verdu
Design & Implementation of Part III: Rescue	Glen Dahlgren
Design & Implementation of Part IV: Homeworld	Glen Dahlgren
Additional Design	Bob Bates
Computer Illustration	Kinetic Arts, 'Lil Gangster Studios, Chris Moore, Paul Alexander, Gregory Bridges, Paul Mock, Anne Marie Cox, Mark Poesch
Cinematic Special Effects and Animation	Mark Poesch and Anne Marie Cox
Music Composition	Glen Dahlgren, Doug Brandon, Eric Heberling
AdLib Transcription	Michael Lindner
System Architecture	Duane Beck and Bob Bates
System Programming	Duane Beck, Mark Poesch, Glen Dahlgren
Graphics System Development	Mark Poesch
Music System Development	Michael Lindner
Package Design and Production Coordination	Peggy Oriani
Cover Illustration	Chris Moore
Production Assistance	Rosie Freeman
Testing Coordination	Alyssa Verdu and Rosie Freeman
Testing	Alyssa Verdu, Josh Schriftman, Ed Storozuk
Producers	Mike Verdu and Glen Dahlgren

Help! Troubleshooting And Technical Assistance

Some common problems and their solutions are described in this section. If your problem is not addressed, first make a boot floppy by exactly following the instructions in the next section. If this does not solve your problem, please call our Technical Support Department at one of the numbers listed in the front of this manual for specific help.

For game hints, you may refer to the enclosed hint book, or try dialing into one of the on-line services (with a modem) where you can talk to real live gamers who have probably been stuck at the same place you are.

I'm not hearing any sound effects

Unlike previous Legend games, *Gateway II: HOMEWORLD* does not contain sound effects.

I've got an MT-32 and do not hear any music

If you have a Roland MT-32 (or compatible) sound module and you are not hearing any music, start the game with the command **HOME MT32**. If you are still not hearing any music, the difficulty can probably be traced to one of two sources:

1. You may have two cards in your computer that are set to the same IRQ. If this is the case, change the IRQ value for one of the cards by using the card's jumpers or switches. Some cards may not allow this. Consult the manual for the card for more details.
2. Your MIDI interface may be set to an IRQ or an I/O address other than the default values of 2 and 330, respectively. In this case, you must specify the appropriate IRQ value or I/O address in the command line when you start up the game. For example, to use a MIDI interface card set to operate on IRQ 5 and address 300, you should start the game by typing HOME MT32 5 300.

I'm getting a low memory warning

If you get a low memory warning when you start up the game, make sure you have taken all of your TSR (Terminate and Stay Resident) programs out of RAM. You need at least 570,000 bytes of free memory to avoid the low memory warning. To solve this problem, follow the instructions in the next section entitled, *Creating a Boot Floppy*.

The mouse cursor is eating the graphics!

If moving your mouse cursor over the picture destroys it, then the mouse you are using is probably not Microsoft compatible. If this happens, try exiting to DOS and starting the game again by typing **HOME XMOUSE**.

The mouse cursor isn't anywhere to be seen

If the mouse doesn't seem to be working, make sure you install the mouse driver before you start up the game. You can usually accomplish this by typing **MOUSE <ENTER>** from the MS-DOS prompt. If you get a "Bad command or file name" error, find out where the mouse driver lives on the disk or consult the documentation that came with your mouse and its driver software. If you know the mouse driver is loaded and you do not have a mouse cursor, try hitting **<TAB>** and then click on the mouse button.

I have an SVGA monitor and I'm having trouble

Trouble can take a variety of forms - from faded or missing graphics, to overwritten text, to missing portions of the screen. In most cases, unusual problems are due either to interference from TSRs or an incompatibility with your SVGA adapter. First, follow the steps in the next section to make a boot floppy. If you are still having problems, then your SVGA adapter is not VESA compatible. You will be able to play this game in VGA mode by using the install program to select VGA graphics.

I've never had a problem like this before...

Don't panic, chances are you are getting interference from a forgotten TSR. Turn to the next section and create a boot floppy by following the instructions exactly. If you are still having problems, please call our Technical Support Department at one of the numbers listed at the front of this manual.

Creating A Boot Floppy

If you have a hard drive and are suffering from problems that you cannot explain, the procedures outlined here will allow you to boot your machine from a clean system boot floppy, uncluttered by autoloading TSRs, device drivers, and complicated **CONFIG.SYS** files. To create a boot floppy, it is easiest to use the automatic feature in the install program. Simply return to the DOS prompt in the directory where you have installed this game. Then type **INSTALL <ENTER>**. From the installations options menu, choose "create a bootable floppy disk" by using the arrow keys and pressing **<ENTER>**. The program will direct you to insert a blank disk at the appropriate time and will let you know when the boot floppy has been created.

Now reboot your computer with this disk still in your **A:** drive. When the boot process is complete you will see this DOS prompt: **A:>**. Then:

1. Type **C:** and hit the **<ENTER>** key.
2. If you are not using a mouse, you may skip this step. If you are, then type **MOUSE <ENTER>**. (If you get a "Bad command or file name" error, find out where the mouse driver lives on the disk or consult the documentation that came with your mouse and its driver software.)
3. Type **CD** and then the name of the directory where you have installed the game, or, **GW2** if you have used the default directory. Then, hit the **<ENTER>** key.
4. Type the appropriate command as listed in *Configuration Options*.

This same process may be duplicated manually by following these steps:

1. Find a blank diskette for your **A:** drive.
2. Insert the blank diskette in the **A:** drive and close the drive door.
3. Type **DIR A:** then hit the **<ENTER>** key.
4. If you see any files listed, you need to go back to step 1 because the disk is not blank and if you continue from here you will wipe out everything on the disk.
5. Type **FORMAT A:/S** then hit the **<ENTER>** key.
6. Type **N** when DOS asks if you want to format another diskette.
7. Type **DIR A:** then hit the **<ENTER>** key.
8. You should see **COMMAND.COM** listed in the newly formatted disk's directory. If you do not, type **COPY C:\COMMAND.COM A:** then hit the **<ENTER>** key.
9. Type **A:** then hit the **<ENTER>** key.

10. Type **COPY CON CONFIG.SYS** then hit the **<ENTER>** key; the DOS prompt is now gone, but the cursor is still there.
11. Type **FILES=20** then hit the **<ENTER>** key.
12. Type **BUFFERS=20** then hit the **<ENTER>** key.
13. Hold down the **<CTRL>** key and hit the letter **Z** once, then the **<ENTER>** key.

DOS tells you it copied one file and the DOS prompt is back on the screen. Congratulations! You just made your own DOS system configuration file on your own DOS system boot floppy. Now reboot your computer with this diskette still in your **A:** drive. When the boot process is complete you will see this DOS prompt: **A:>**

14. Then type **C:** and hit the **<ENTER>** key.
15. If you are not using a mouse, you may skip this step. If you are, then type **MOUSE <ENTER>**. (If you get a "Bad command or file name" error, find out where the mouse driver lives on the disk or consult the documentation that came with your mouse and its driver software.)
16. Type **CD** and then the name of the directory where you have installed the game, or, **GW2** if you have used the default directory. Then, hit the **<ENTER>** key.
17. Type the appropriate command as listed in *Configuration Options*.

If you have any further trouble, please call Technical Support at one of the numbers listed at the front of this manual.

Legal Stuff

We appreciate your purchasing a license to use our product, and we want you to feel good about that purchase. Unfortunately, our lawyers have forced us to put some rather obnoxious verbiage here. Fortunately, all of our competition puts the same stuff in their manuals. Some of the things written below may appear to be outrageous and unconscionable. But then, so are our lawyers. (Q: Why does New Jersey have more toxic waste than lawyers? A: It got first choice.)

1. Limited Warranty. This manual and the related software product are sold "AS IS," without warranty as to their performance. Wait a minute! You mean that if the program does not have a happy ending, I do not get my money back? ...Yes. We have probably already spent your money to keep our programmers in pizza anyway. Here comes some more legalese to try to nail down that concept.

The entire risk as to the quality and performance of the computer software program is assumed by the user. However, Legend Entertainment Company warrants for a period of 90 days to the original purchaser that the medium on which the software is recorded is free from defects in material and workmanship. If during that period ending 90 days from purchase a defect should become apparent, return the disk to Legend or your dealer and Legend will replace the disk without charge to you. Your sole and exclusive remedy in the event of a defect is expressly limited to replacement of the disk as provided above. This warranty gives you specific legal rights and you may also have other rights which vary from state to state. (NOTE: After the warranty period, a defective disk may be returned to us with a check or money order for \$7.50 U.S. and we will replace it.)

THE WARRANTIES SET FORTH ABOVE ARE IN LIEU OF ALL WARRANTIES, EXPRESS OR IMPLIED, INCLUDING ANY IMPLIED WARRANTIES OF MERCHANTABILITY OR FITNESS FOR ANY PARTICULAR PURPOSE. SOME STATES DO NOT ALLOW LIMITATIONS ON HOW LONG AN IMPLIED WARRANTY LASTS, SO THE ABOVE LIMITATION MAY NOT APPLY TO YOU. IN NO EVENT SHALL LEGEND ENTERTAINMENT COMPANY OR ANYONE ELSE WHO HAS BEEN INVOLVED IN THE CREATION OR PRODUCTION OF THIS COMPUTER SOFTWARE PROGRAM BE LIABLE FOR DIRECT, INDIRECT, SPECIAL, OR CONSEQUENTIAL DAMAGES ARISING OUT OF USE OF THIS SOFTWARE OR ANY BREACH OF THE WARRANTY SET FORTH ABOVE. SOME STATES DO NOT ALLOW THE EXCLUSION OR LIMITATION OF INCIDENTAL OR CONSEQUENTIAL DAMAGES, SO THE ABOVE LIMITATION MAY NOT APPLY TO YOU. For example, you may be playing our game when a friend passing by is distracted by some of the graphics. He walks into a floor lamp.

The lamp falls over, scaring your cat. The cat streaks from the room, upsetting a heater which sets some curtains afire. Unfortunately, it is a windy day and the fire is soon out of control. Three days later Chicago is still ablaze. If we took out an insurance policy against such remote contingencies, we'd have to charge \$1599.99 for the game, and you would not be reading this lame copy. Anyway, we do not assume liability for things like this, even if the city is a small one like Muleshoe, Texas.

2. Copyright. This manual and the related software product are copyright (C), 1993, by Legend Entertainment Company. All rights are reserved. This document may not, in whole or part, be copied, reproduced, plagiarized, or otherwise ripped off without our express consent (which we are not going to give). The money you spent on this product purchased a license to use it (check your other software; almost no software is sold these days). The scope of the license is to make such copies as are reasonably necessary for your personal use. You do not have the right to give copies to your friends (or enemies). Unreasonable copying and/or distributing of this product is a violation of law. The U. S. Copyright Act provides for statutory damages of up to \$50,000 for willful infringement of a copyright. Giving copies of our software to your friends is an infringement. GOTCHA! Now that you know that unauthorized copying is an infringement, if you do so it will be willful, and you can be nailed for some big bucks if we catch you.

3. Other Copyright and Trademark Notices.

"Legend Entertainment" is a registered trademark of Legend Entertainment Company.

"AdLib Music Synthesizer Card" is a trademark of AdLib Inc.

"Sound Blaster" is a trademark of Creative Labs, Inc.

**MIDI Interface Toolkit Copyright ©, 1987 and 1989, by MusicQuest, Inc.
All rights reserved by MusicQuest.**

"MT-32," "MT-100," "CM-32L," and "LAPC-1" are trademarks of Roland Corporation.

"CompuServe" is a trademark of CompuServe Incorporated.

"IBM" is a trademark of IBM Corporation.

"Microsoft" is a trademark of Microsoft Corporation.

Portions of the game code are Copyright (©, 1988-1990 by Genus Microprogramming, Incorporated.

